

STOW HIGH®

RECLAIM
YOUR GARAGE SPACE™

QUICK START GUIDE

Version 2-December 2019

- ✓ Complete installation as detailed in your Installation Manual.
- ✓ Read all steps detailed herein before commencing use.
- ✓ Refer to your User Manual for full system instructions, information, maintenance and cautions.
- ✓ Enjoy the advantages & convenience of Stow High®

Each Stow High® includes a remote control unit. The remote-control unit has been programmed at the Australian factory and is paired to the Stow High® unit and is ready for immediate use.

1

Precautions before use

- ✓ Do not stand under the unit when operating.
- ✓ Not to be operated by children without supervision.
- ✓ Ensure no objects are under, behind or on top of unit when operating.
- ✓ Do not overload unit.
- ✓ The STOP button on the remote control unit will stop the unit operating in either direction.

4

Replace cover/back



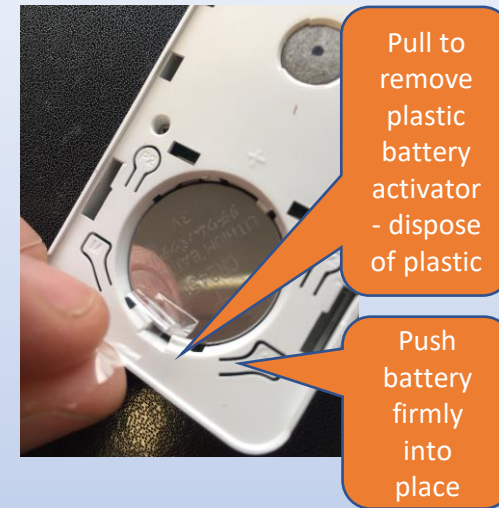
2

Remove back cover of remote



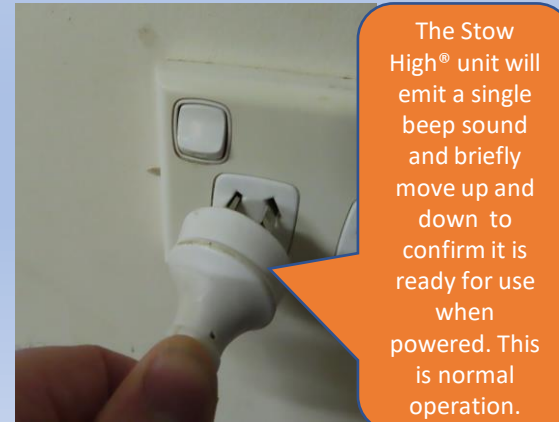
3

Activate remote control battery



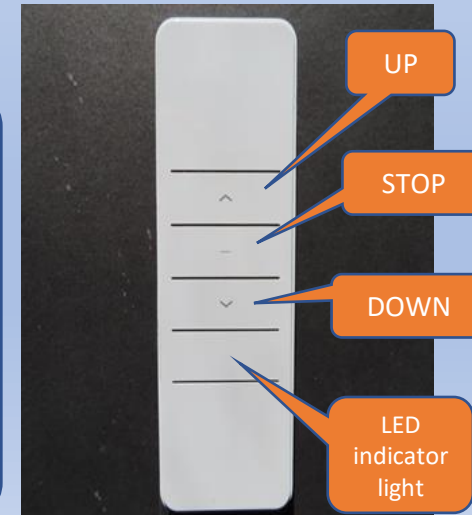
5

Plug cord into power supply



6

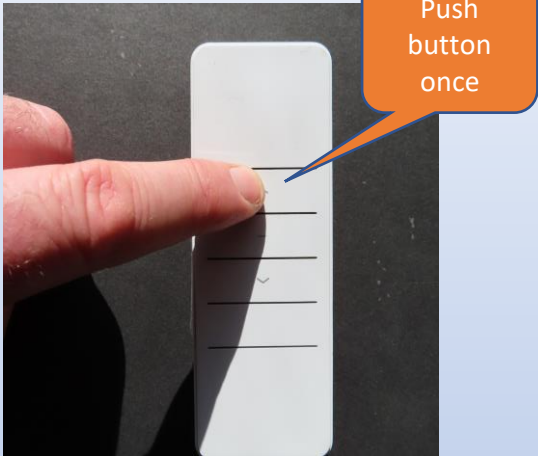
Remote control overview



7

Press

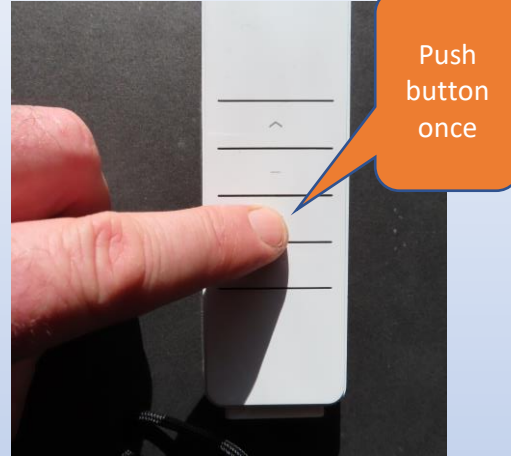
Up to close



8

Press

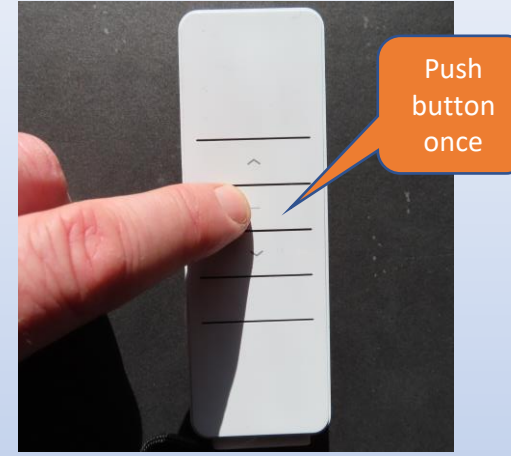
Down to open



9

Press

Stop at any time to stop movement



A single push of the UP or Down button will automatically open or close the device.

10

Test function

Now that you are familiar with the Stow High® device, remote control unit and its functions, use the remote control to operate the unit and become familiarized with the opening and closing function.

If required undertake any adjustments as detailed in Installation Manual.

11

Remote holder



Additional product information

Stow High® features a memory saving function. If the power is disconnected or the battery in the remote has lost power the Stow High® unit and remote control unit will remember all previous settings once power is restored and will be ready for immediate use.

Refer to your User's Manual for information on how to change the factory settings in order to customise the settings to suit your own individual requirements.

Need support?

We're here to help.

If you have followed the instructions described in this guide and the instructions detailed in the User's and Installation Manual's and are still having difficulties functioning the Stow High® system contact our Customer Service Team by visiting www.stow-high.com.au/customersupport

NSHG Investments Pty Ltd
ABN 39 634 611 019
www.stow-high.com.au

Provisional Patents
2019902684, 2019902535
Design Patents
201913361, 201916000, 202010033, 201914826

Stow High® and related brand names and trademarks of NSHG Investments Pty Ltd

© 2019 NSHG Investments Pty Ltd